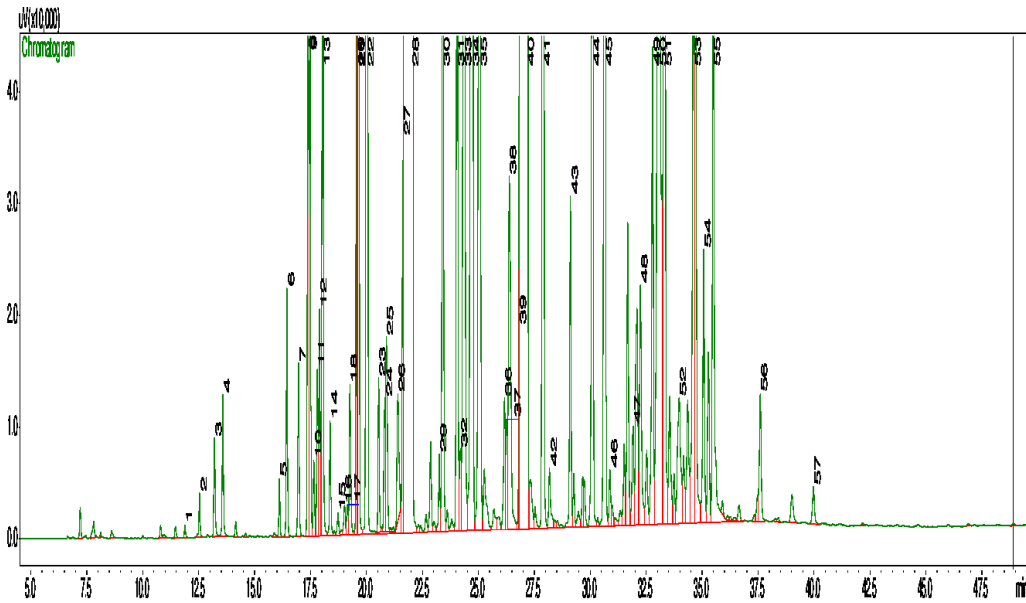


LAVENDER OIL

Lavandula angustifolia

Typical GC Profile



Peak#	Compound Name	Area%	ACCEPTABLE RANGE
1	BUTYL ACETATE	0.01	
2	METHYL HEXYL ETHER	0.02	
3	CIS-3-HEXENOL	0.05	
4	HEXANOL	0.08	
5	ALPHA-THUJENE	0.03	
6	ALPHA-PINENE	0.12	
7	CAMPHENE	0.09	
8	1-OCTENE-3-OL	0.31	
9	ETHYL AMYL KETONE	0.28	
10	SABINENE	0.04	
11	BUTYL BUTYRATE	0.08	
12	BETA-PINENE	0.12	
13	MYRCENE	0.44	
14	HEXYL ACETATE	0.06	
15	ALPHA-PHELLANDRENE	0.01	
16	DELTA-3-CARENE	0.01	
17	ALPHA-TERPINENE	0.02	
18	PARA-CYMENE	0.09	
19	LIMONENE	0.61	0.4 – 1.5%
20	1,8-CINEOL	1.31	MAX 3.5%
21	CIS-BETA-OCIMENE	2.18	
22	TRANS-BETA-OCIMENE	1.88	
23	GAMMA-TERPINENE	0.08	
24	TRANS-SABINENE HYDRATE	0.07	
25	CIS-LINALOOL OXIDE	0.13	
26	TRANS-LINALOOL OXIDE	0.10	
27	ALPHA-TERPINOLENE	0.19	
28	LINALOOL	34.07	25 – 40%
29	HEXYL BUTYRATE	0.05	
30	CAMPHOR	0.47	MAX 1.2%
31	LAVANDULOL	0.47	
32	DELTA-TERPINEOL	0.05	
33	BORNEOL	0.96	
34	TERPINEN-4-OL	3.28	1.2 – 6%
35	ALPHA-TERPINEOL	0.89	
36	NEROL	0.09	
37	HEXYL-2-METHYL BUTYRATE	0.06	
38	HEXYL-3-METHYL BUTYRATE	0.34	
39	GERANIOL	0.41	
40	LINALYL ACETATE	39.15	25 – 46%
41	LAVANDULYL ACETATE	1.38	MIN 1%
42	BORNYL ACETATE	0.05	
43	HEXYL TIGLATE	0.19	
44	NERYL ACETATE	0.71	
45	GERANYL ACETATE	1.22	
46	HEXYL CAPROATE	0.03	
47	BETA-BOURBONENE	0.08	
48	COUMARIN	0.20	
49	ALPHA-SANTALENE	0.33	
50	BETA-CARYOPHYLLENE	3.24	
51	TRANS-BETA-FRANESENE	1.05	
52	ALPHA-HUMULENE	0.16	
53	GERMACRENE D	0.49	
54	BETA-BISABOLENE	0.19	
55	GAMMA-CADINENE	0.44	
56	CARYOPHYLLENE OXIDE	0.10	
57	ALPHA-BISABOLOL	0.03	

Notes