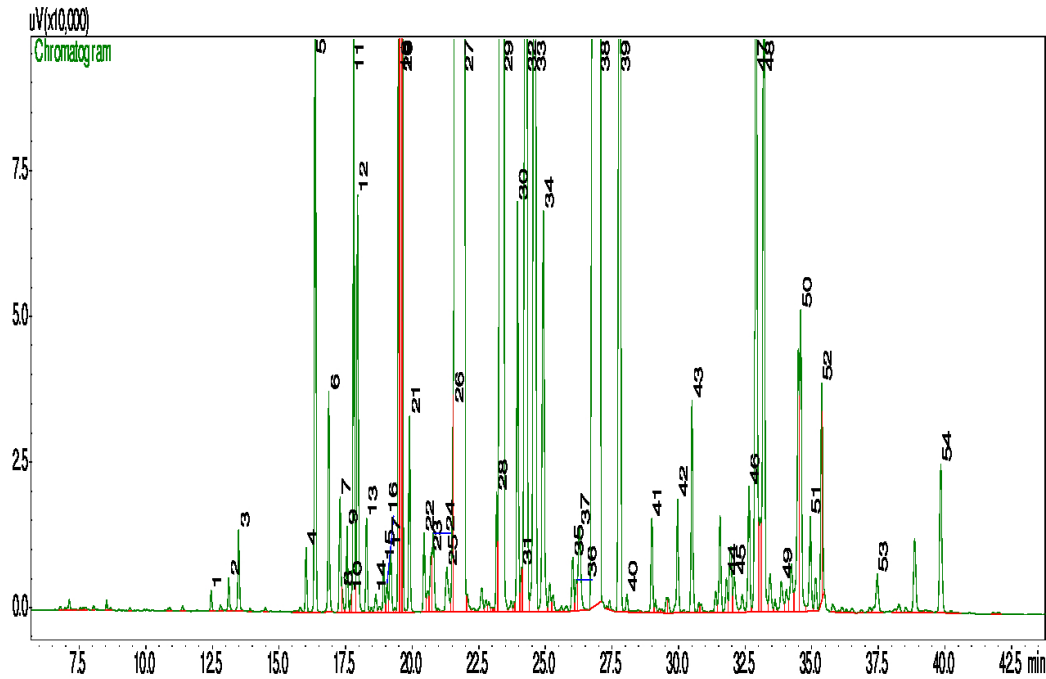


Typical GC Profile



Peak#	Compound Name	Area%	ACCEPTABLE RANGE
1	METHYL HEXYL ETHER	0.03	
2	CIS-3-HEXENOL	0.04	
3	HEXANOL	0.09	
4	ALPHA-THUJENE	0.06	
5	ALPHA-PINENE	0.70	
6	CAMPHENE	0.23	
7	1-OCTENE-3-OL	0.13	
8	ETHYL AMYL KETONE	0.02	
9	SABINENE	0.09	
10	BUTYL BUTYRATE	0.01	
11	BETA-PINENE	0.63	
12	MYRCENE	0.44	
13	HEXYL ACETATE	0.10	
14	ALPHA-PHELLANDRENE	0.02	
15	DELTA-3-CARENE	0.05	
16	ALPHA-TERPINENE	0.03	
17	PARA-CYMENE	0.08	
18	LIMONENE	1.19	
19	EUCALYPTOL	6.88	3 – 7%
20	CIS-BETA-OCIMENE	0.76	
21	TRANS-BETA-OCIMENE	0.27	
22	GAMMA-TERPINENE	0.09	
23	TRANS-SABINENE HYDRATE	0.07	
24	CIS-LINALOOL OXIDE	0.11	
25	TRANS-LINALOOL OXIDE	0.09	
26	ALPHA-TERPINOLENE	0.16	
27	LINALOOL	34.55	30 – 45%
28	HEXYL BUTYRATE	0.12	
29	CAMPHOR	6.68	3.5 – 6.5%
30	LAVANDULOL	0.46	
31	DELTA-TERPINEOL	0.05	
32	BORNEOL	2.13	
33	TERPINEN-4-OL	2.61	
34	ALPHA-TERPINEOL	0.60	
35	NEROL	0.08	
36	HEXYL-2-METHYL BUTYRATE	0.04	
37	HEXYL-3-METHYL BUTYRATE	0.16	
38	LINALYL ACETATE	30.90	20 – 40%
39	LAVANDULYL ACETATE	1.77	0.6 – 2.3%
40	BORNYL ACETATE	0.02	
41	HEXYL TIGLATE	0.11	
42	NERYL ACETATE	0.14	
43	GERANYL ACETATE	0.25	
44	BETA-BOURBONENE	0.05	
45	COUMARIN	0.06	
46	ALPHA-SANTALENE	0.17	
47	BETA-CARYOPHYLLENE	1.23	
48	TRANS-BETA-FARNESENE	1.02	
49	ALPHA-HUMULENE	0.06	
50	GERMACRENE D	0.43	
51	BETA-BISABOLENE	0.14	
52	GAMMA-CADINENE	0.20	
53	CARYOPHYLLENE OXIDE	0.07	
54	ALPHA-BISABOLOL	0.23	

Notes