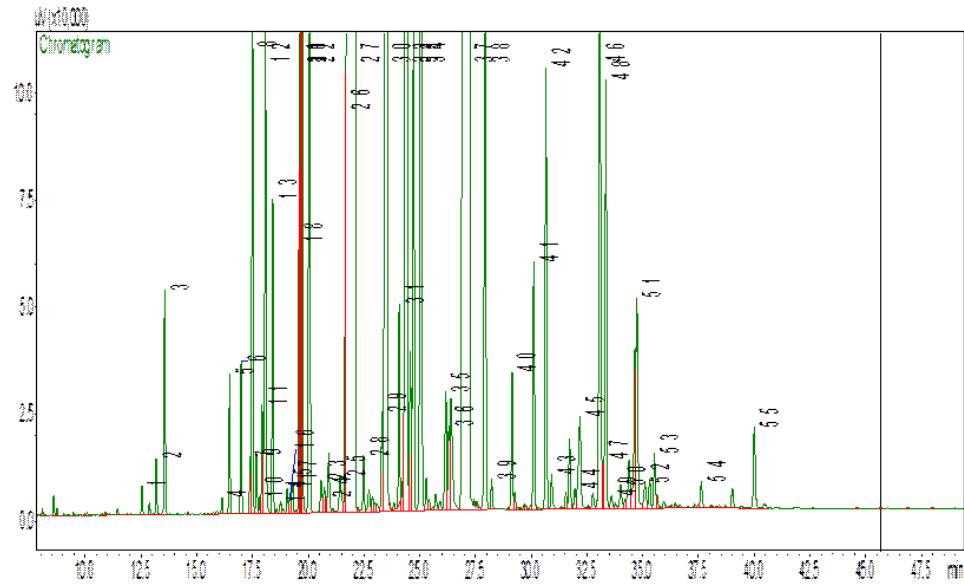


## Typical GC Profile



Peak#	Compound Name	Area%	ACCEPTABLE RANGE
1	METHYL HEXYL ETHER	0.03	
2	CIS-3-HEXENOL	0.07	
3	HEXANOL	0.27	
4	ALPHA-THUJENE	0.02	
5	ALPHA-PINENE	0.17	
6	CAMPHENE	0.20	
7	1-OCTENE-3-OL	0.07	
8	ETHYL AMYL KETONE	0.72	0.4 – 1.2%
9	SABINENE	0.08	
10	BUTYL BUTYRATE	0.02	
11	BETA-PINENE	0.16	
12	MYRCENE	0.83	
13	HEXYL ACETATE	0.39	
14	ALPHA-PHELLANDRENE	0.02	
15	DELTA-3-CARENE	0.03	
16	PARA-CYMENE	0.02	
17	ALPHA-TERPINENE	0.05	
18	LIMONENE	0.65	
19	BETA-PHELLANDRENE	0.52	
20	EUCALYPTOL	3.91	
21	CIS-BETA-OCIMENE	1.77	
22	TRANS-BETA-OCIMENE	1.29	
23	GAMMA-TERPINENE	0.06	
24	CIS-LINALOOL OXIDE	0.02	
25	TRANS-LINALOOL OXIDE	0.08	
26	ALPHA-TERPINOLENE	0.35	
27	LINALOOL	35.23	25 – 37%
28	3-OCTYL ACETATE	0.08	
29	HEXYL BUTYRATE	0.52	0.4 – 1.2%
30	CAMPHOR	4.59	3.5 – 6.5%
31	LAVANDULOL	0.25	T – 0.7%
32	BORNEOL	2.08	1.4 – 3%
33	TERPINEN-4-OL	0.78	T – 1%
34	ALPHA-TERPINEOL	1.20	
35	NEROL	0.21	
36	HEXYL-2-METHYL BUTYRATE	0.12	
37	LINALYL ACETATE	35.80	35 – 47%
38	LAVANDULYL ACETATE	1.43	0.6 – 2.3%
39	BORNYL ACETATE	0.05	
40	HEXYL TIGLATE	0.20	
41	NERYL ACETATE	0.36	
42	GERANYL ACETATE	0.65	
43	HEXYL CAPROATE	0.06	
44	BETA-BOURBONENE	0.03	
45	COUMARIN	0.25	
46	BETA-CARYOPHYLLENE	1.28	
47	TRANS-ALPHA-BERGAMOTENE	0.06	
48	TRANS-BETA-FARNESENE	0.65	
49	CIS-BETA-FARNESENE	0.03	
50	ALPHA-HUMULENE	0.05	
51	GERMACRENE D	0.38	
52	BETA-BISABOLENE	0.05	
53	GAMMA-CADINENE	0.10	
54	CARYOPHYLLENE OXIDE	0.05	
55	ALPHA-BISABOLOL	0.16	

## Notes