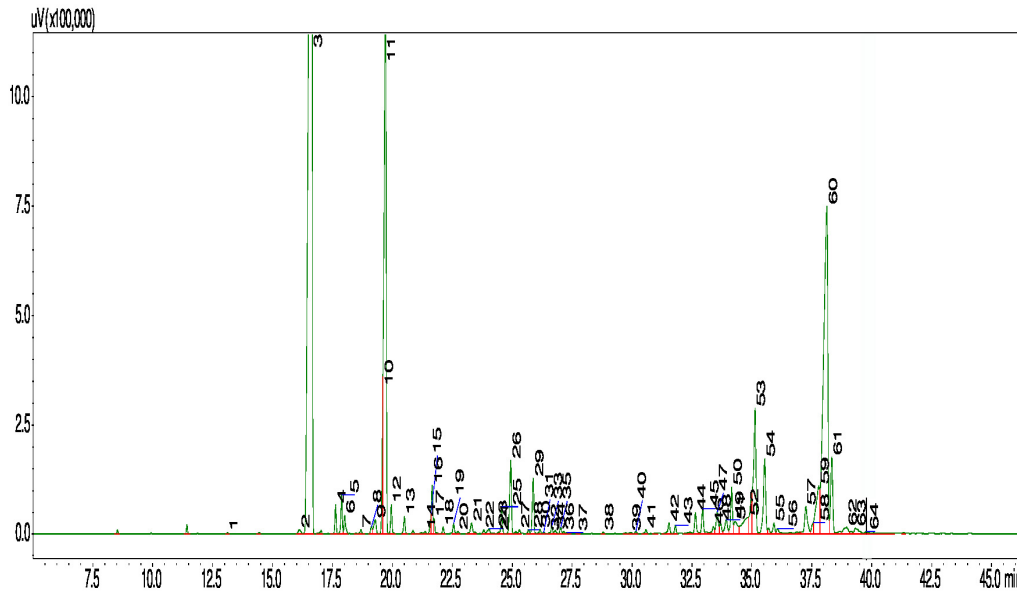


Typical GC Profile



Notes

Peak #	Compound Name	Area%	ACCEPTABLE RANGE
1	CIS-3-HEXENOL	0.03	
2	ALPHA-THUJENE	0.13	
3	ALPHA-PINENE	41.38	35.0 – 50.0%
4	SABINENE	0.43	
5	BETA-PINENE	0.62	
6	MYRCENE	0.34	
7	ALPHA-PHELLANDRENE	0.09	
8	ALPHA-TERPINENE	0.15	
9	PARA-CYMENE	0.41	
10	LIMONENE	1.27	
11	1,8-CINEOL	13.28	9.0 – 16.0%
12	TRANS-BETA-OCIMENE	0.48	
13	GAMMA-TERPINENE	0.3	
14	ALPHA-PARA-DIMETHYLSTYRENE	0.05	
15	ALPHA-TERPINOLENE	0.21	
16	LINALOOL	0.79	
17	3-METHYL BUTYL-2-METHYL BUTYRATE	0.20	
18	CIS-ROSE OXIDE	0.11	
19	ALPHA-CAMPHOLENOL	0.20	
20	TRANS-ROSE OXIDE	0.05	
21	TRANS-PINOCARVEOL	0.26	
22	PINOCARVONE	0.08	
23	DELTA-TERPINEOL	0.15	
24	PARA-CYMENE-8-OL	0.04	
25	TERPINEN-4-OL	0.48	
26	ALPHA-TRIPNEOL	1.52	0.0 – 9.0%
27	VEBENONE	0.08	
28	TRANS-CARVEOL	0.07	
29	CITRONELLOL	1.06	
30	NERAL	0.09	
31	3-METHYL HEXYL BUTYRATE	0.03	
32	ISOPENTYL HEXANOATE	0.03	
33	GERANIOL	0.15	
34	LINALYL ACETATE	0.08	
35	GERANIAL	0.11	
36	TRANS-2-UNDECEN-1-OL	0.05	
37	ALCOHOL C10	0.03	
38	METHYL GERANATE	0.03	
39	TERPINYL ACETATE	0.04	
40	ELIXENE	0.05	
41	ALPHA-CUBEBENE	0.09	
42	ALPHA-COPAENE	0.26	
43	BETA-ELEMENE	0.16	
44	ALPHA-GURJUNENE	0.44	
45	BETA-CARYOPHYLLENE	0.52	
46	CYCLOSATIVENE	0.16	
47	AROMADENDRENE	0.56	
48	CUBEB-11-ENE	0.25	
49	ALLOAROMADENDRENE	0.44	
50	EPI-BETA-CARYOPHYLLENE	1.07	
51	GAMMA-ELEMENE	0.50	
52	BICYCLOGERMACRENE	1.16	0.5 – 1.50%
53	VIRIDIFLORENE	3.44	
54	CIS-CALAMENENE	2.01	
55	CADINA-1,4-DIENE	0.24	
56	ALPHA-CALACORENE	0.16	
57	LEDOL	0.89	
58	SPATHULENOL	0.22	
59	GLOBULOL	2.07	0.0 – 11.0%
60	VIRIDIFLOROL	15.50	9.0 – 18.0%
61	EPIGLOBULOL	1.82	
62	TAU-CADINOL	0.35	
63	CADINA-4-EN-10-OL	0.29	
64	CADALENE	0.10	