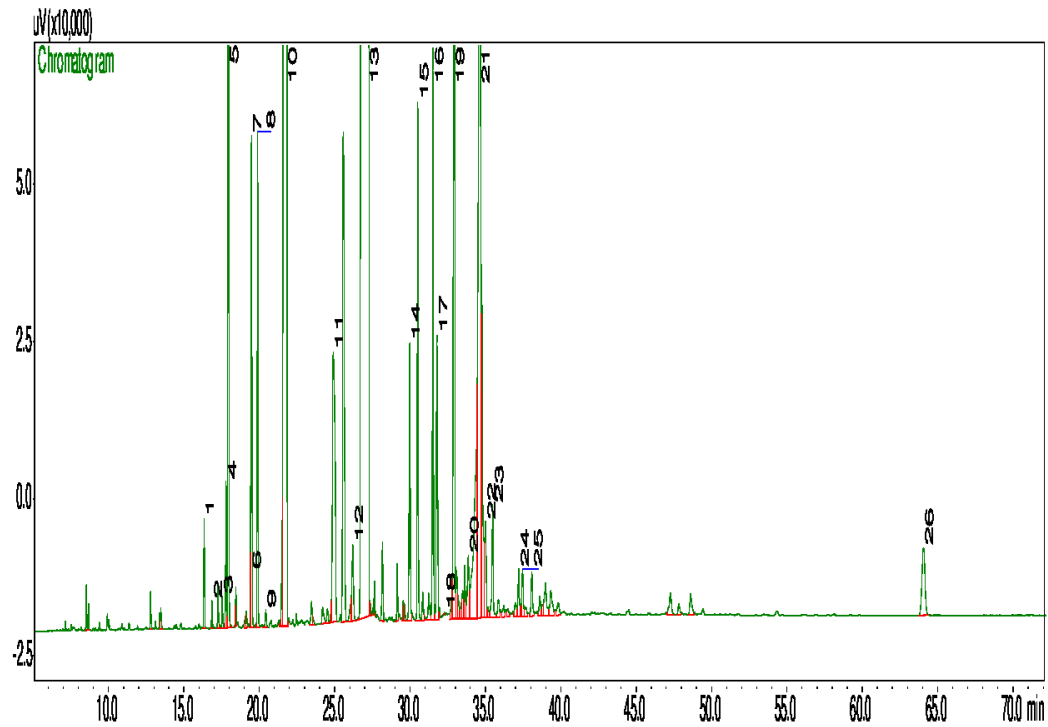


## Typical GC Profile



| Peak# | Compound Name            | Area% | ACCEPTABLE RANGE |
|-------|--------------------------|-------|------------------|
| 1     | ALPHA-PINENE             | 0.09  |                  |
| 2     | CAMPHENE                 | 0.02  |                  |
| 3     | SABINENE                 | 0.03  |                  |
| 4     | BETA-PINENE              | 0.12  |                  |
| 5     | MYRCENE                  | 0.54  |                  |
| 6     | LIMONENE                 | 0.12  |                  |
| 7     | CIS-BETA-OCIMENE         | 0.46  |                  |
| 8     | TRANS-BETA-OCIMENE       | 0.40  |                  |
| 9     | GAMMA-TERPINENE          | 0.02  |                  |
| 10    | LINALOOL                 | 14.16 | 13 – 24%         |
| 11    | ALPHA-TERPINEOL          | 1.12  | 1.0 – 5.0%       |
| 12    | NEROL                    | 0.10  |                  |
| 13    | LINALYL ACETATE          | 69.25 | 56 – 70.5%       |
| 14    | NERYL ACETATE            | 0.28  |                  |
| 15    | GERANYL ACETATE          | 0.49  |                  |
| 16    | ALPHA-COPAENE            | 0.56  |                  |
| 17    | BETA-BOURBONENE          | 0.33  |                  |
| 18    | COUMARIN                 | 0.01  |                  |
| 19    | TRANS-BETA-CARYOPHYLLENE | 1.20  |                  |
| 20    | ALPHA-HUMULENE           | 0.10  |                  |
| 21    | GERMACRENE D             | 2.92  | 1.50 – 7.50%     |
| 22    | BICYCLOGERMACRENE        | 0.13  |                  |
| 23    | DELTA-CADINENE           | 0.15  |                  |
| 24    | SPATHULENOL              | 0.06  |                  |
| 25    | CARYOPHYLLENE OXIDE      | 0.07  |                  |
| 26    | SCLAREOL                 | 0.20  | 0.2 – 2.6%       |

### Notes

.....

.....

.....