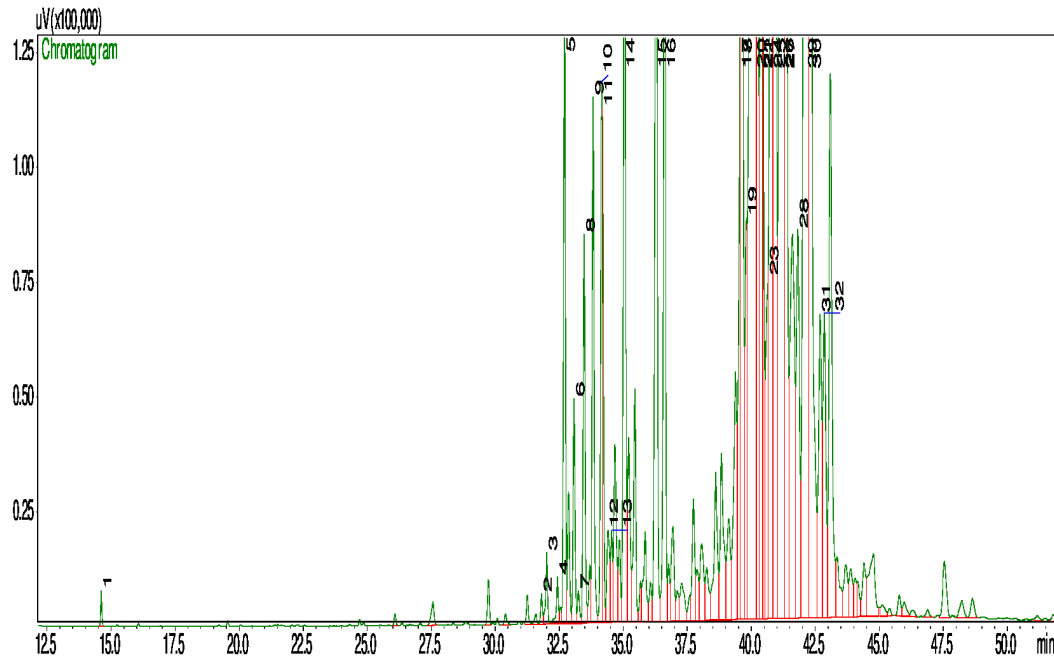


Typical GC Profile

Peak #	Compound Name	Area%	ACCEPTABLE RANGE
1	SANTENE	0.05	
2	BETA-ELEMENE	0.05	
3	7-EPI-SESQUITHUJENE	0.13	
4	CIS-ALPHA-BERGAMOTENE	0.09	
5	ALPHA-SANTALENE	1.08	
6	TRANS-ALPHA-BERGAMOTENE	0.39	
7	TRANS-BETA-FARNESENE	0.06	
8	EPI-BETA-SANTALENE	0.71	
9	BETA-SANTALENE	0.96	
10	GAMMA-CURCUMENE	0.89	
11	BETA-CURCUMENE	0.52	
12	SELINA-4,11-DIENE	0.24	
13	BETA-BISABOLENE	0.18	
14	AR-CURCUMENE	1.74	
15	NEROLIDOL	2.59	
16	DENDERALASIN	1.91	
17	BETA-BISABOLOL	0.78	
18	ALPHA-BISABOLOL	2.72	2.00 – 12.50%
19	EPI-ALPHA-SANTALOL	0.77	
20	CIS-ALPHA-SANTALOL	19.90	15.00 – 25.00%
21	CIS-TRANS-ALPHA-BERGAMOTOL	3.26	2.00 – 10.00%
22	TRANS-ALPHA-SANTALOL	1.01	
23	EPI-BETA-SANTALOL	0.73	0.50 – 3.50%
24	CIS-BETA-SANTALOL	5.35	5.00 – 20.00%
25	TRANS,TRANS-ALPHA-FARNESOL	5.25	2.50 – 15.00%
26	CIS-NUCIFEROL	6.15	2.00 – 15.00%
27	CIS-GAMMA-CURCUMENE-12-OL	5.46	
28	TRANS-BETA-SANTALOL	1.17	
29	CIS-BETA-CURCUMENE-12-OL	9.47	
30	CIS-LANCEOL	4.45	1.00 – 10.00%
31	BETA-SINENSAL	0.92	
32	ALPHA-SINENSAL	0.90	

Notes

.....

.....

.....