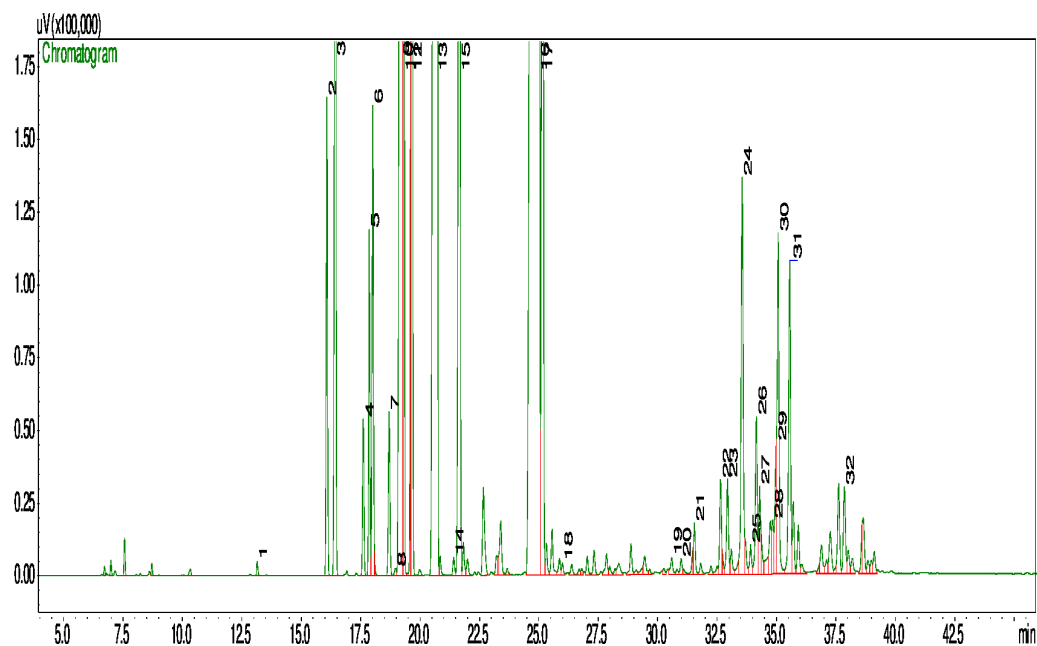


## Typical GC Profile



Peak #	Compound Name	Area%	ACCEPTABLE RANGE
1	CIS-3-HEXENOL	0.03	
2	ALPHA-THUJENE	0.87	
3	ALPHA-PINENE	2.42	1.00 – 6.00%
4	SABINENE	0.30	MAX 3.5%
5	BETA-PINENE	0.66	
6	MYRCENE	0.89	
7	ALPHA-PHELLANDRENE	0.36	
8	1,4-CINEOL	0.02	
9	ALPHA-TERPINENE	9.80	5.00 – 13.00%
10	PARA-CYMENE	2.82	0.5 – 12.00%
11	LIMONENE	0.81	0.50 – 4.00%
12	1,8-CINEOL	2.86	MAX 15.00%
13	GAMMA-TERPENE	20.16	10.00 – 28.00%
14	ALPHA-PARA-DIMETHYL STYRENE	0.04	
15	TERPINOLENE	3.44	1.50 – 5.00%
16	TERPINEN-4-OL	42.39	MIN 30.00%
17	ALPHA-TERPINEOL	3.22	1.50 – 8.00%
18	NEROL	0.03	
19	ALPHA-CUBEBENE	0.06	
20	METHYL EUGENOL	0.04	
21	ALPHA-COPAENE	0.13	
22	ALPHA-GURJUNENE	0.23	
23	BETA-CARYOPHYLLENE	0.25	
24	AROMADENDRENE	1.16	MAX 7.0%
25	ALPHA-HUMULENE	0.07	
26	ALLOAROMADENDRENE	0.41	
27	BETA-CADINENE	0.23	
28	BETA-SELINENE	0.13	
29	ALPHA-AMORPHENE	0.24	
30	VIRIDIFLORENE	0.99	
31	DELTA-CADINENE	0.87	
32	VIRIDIFLOROL	0.25	

### Notes

.....

.....

.....