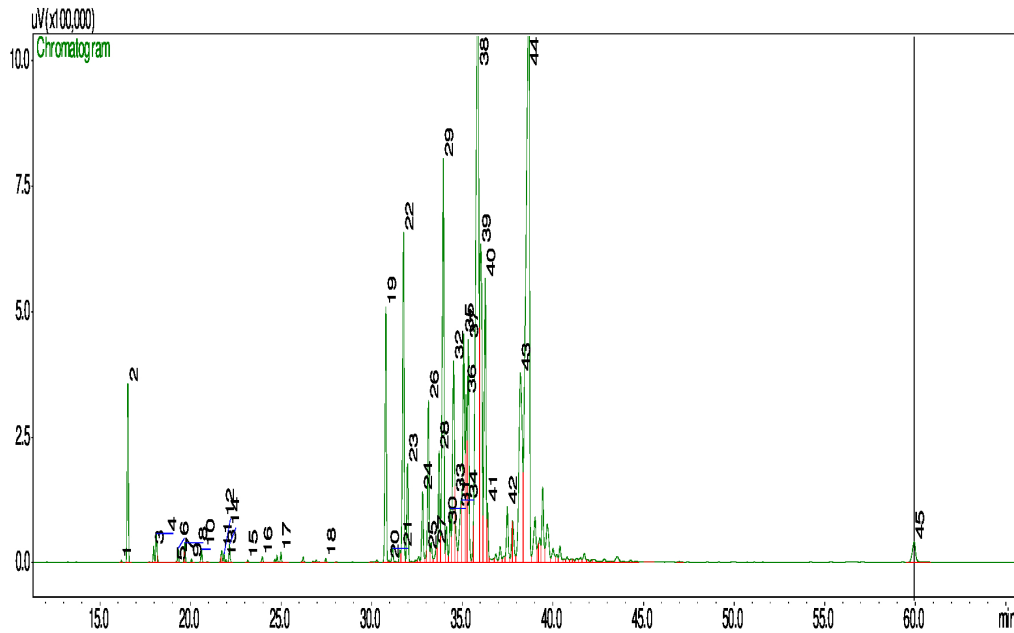


## Typical GC Profile



Peak #	Compound Name	Area%	ACCEPTABLE RANGE
1	ALPHA-THUJENE	0.02	
2	ALPHA-PINENE	1.62	
3	BETA-PINENE	0.15	
4	MYRCENE	0.26	
5	ALPHA-TERPINENE	0.01	
6	PARA-CYMENE	0.13	
7	LIMONENE	0.03	
8	1,8-CINEOL	0.17	
9	TRANS-BETA-OCIMENE	0.04	
10	GAMMA-TERPINENE	0.14	
11	LINALOOL	0.13	
12	ISOAMYL ISOVALERATE	0.08	
13	2-METHYL BUTYL ISOVALERATE	0.03	
14	3-METHYL-3-BUTYL-3-METHYL BUTYRATE	0.18	
15	TERPINEN-4-OL	0.04	
16	ISOAMYL TIGLATE	0.07	
17	GERANYL TIGLATE	0.10	
18	3-OCTENYL ACETATE	0.05	
19	ALPHA-CUBEBENE	3.17	
20	BENZYL ISOVALERATE	0.03	
21	BENZYL VALERATE	0.18	
22	ALPHA-COPAENE	4.53	2.00 – 6.00%
23	BETA-ELEMENE	1.10	
24	ALPHA-GURJUNENE	0.90	
25	GAMMA-ELEMENE	0.08	
26	BETA-CARYOPHYLLENE	2.00	
27	ALPHA-MURROLENE	0.28	
28	AROMADENDRENE	1.51	
29	ISOLEDENE	6.50	4.00 – 8.00%
30	ALPHA-HUMULENE	0.51	
31	ALLOAROMADENDRENE	0.66	
32	CADINA-1(6)4-DIENE	3.33	
33	GAMMA-GURJUNENE	0.63	
34	ALPHA-FARNESENE	1.19	
35	BETA-SELINENE	3.54	
36	GAMMA-MURROLENE	1.96	
37	ALPHA-SELINENE	3.28	
38	TRANS-CALAMENENE	10.41	7.00 – 11.00%
39	FLAVESONE (BETA-TRIKETONE)	5.83	
40	CADINA-1,4-DENE	4.68	3.00 – 7.00%
41	BETA-CALACORENE	0.64	
42	SPATHULENOL	0.86	
43	ISOLEPTOSPERMONE (BETA-TRIKETONE)	5.60	
44	LEPTOSPERMONE (BETA-TRIKETONE)	17.46	
45	GRANDIFLORONE (BETA-TRIKETONE)	0.61	

### Notes

.....

.....

.....