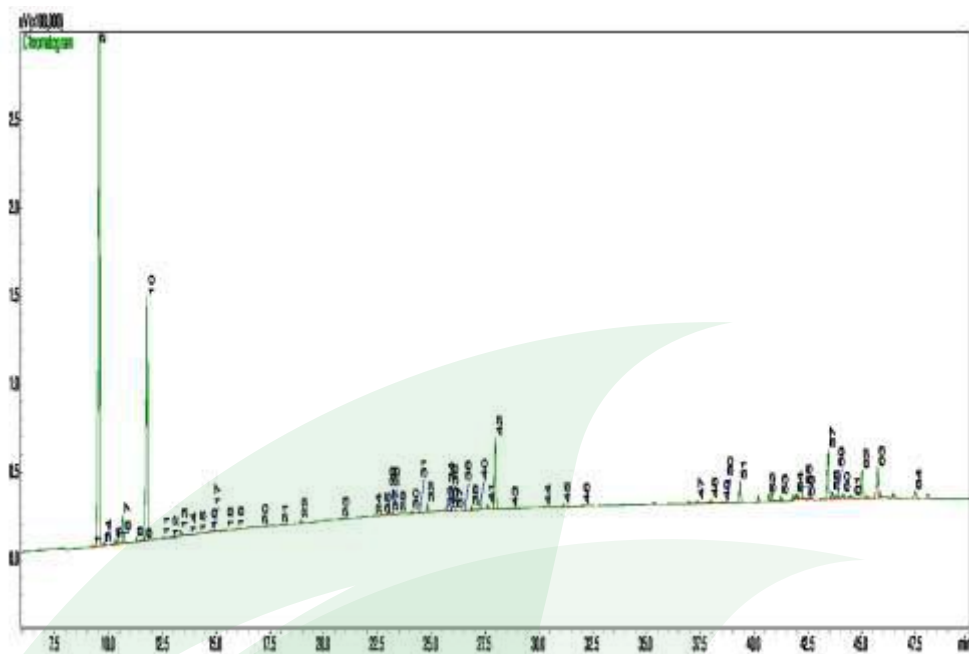


Typical GC Profile



Peak#	Compound Name	Area%
1	ALPHA-THUBENE	0.11
2	(-)-ALPHA-PINENE	44.49
3	FENCHENE <RPM>	0.04
4	CAMPHENE	0.16
5	SABINENE	0.37
6	PINENE <BETA>	0.74
7	BETA-BURSENE	1.61
8	(+)-S-CARENE	0.25
9	CYMBENE <PARA>	0.07
10	D-LIMONENE	19.41
11	GAMMA-TERPINENE	0.17
12	SABINENE HYDRATE <CIS>	0.04
13	ALPHA- TERPINOLEN	0.45
14	SABINENE HYDRATE, TRANS	0.01
15	ALPHA-CAMPHOLINOL	0.029
16	FINOCAMFEOL	0.10
17	CIS-VERBENOL	0.13
18	ENDO-BORNEOL	0.07
19	TERPINEN-4-OL	0.05
20	MENTHYL ACETATE	0.01
21	CIS-SABINENE HYDRATE ACETATE	0.09
22	BOMBYL ACETATE	0.30
23	ELEMENE <DELTA>	0.01
24	CIS-ALPHA-BERGAMOTENE	0.01
25	SESCQUHUBENE <7-EPI>	0.05
26	1,7-8E-8PI-BETA-CEDRENE	0.20
27	CARTOPHYLLENE	0.13
28	BETA-CEDRENE	0.02
29	CIS-THUIOPSENE	0.05
30	HUMULENE	0.10
31	ALPHA-ACORADIENE	0.03
32	GERMACRENE D	0.55
33	GAMMA-ACORADIENE	0.13
34	ELEMENE DELTA	0.03
35	CADINENE <DELTA>	0.01
36	CEADRENE <BETA>	0.02
37	BISABOLENE <EZ>, GAMMA<	0.02
38	BLENOL <ALPHA>	0.07
39	GERMACRENE B	0.22
40	GERMACREN D-4-OL	0.38
41	ALLO-CEDROL	0.31
42	CEADROL	3.09
43	TAU-CABINOL	0.04
44	SHYBUNOL	0.05
45	OPIOPANONE	0.10
46	CEADRYL ACETATE	0.08
47	MANIOL OXIDE	0.17
48	LEVOPINADIENE	0.25
49	ABIETARIENE	0.09
50	MANIOL	0.02
51	ABIETA-9,13-DIENE	1.38
52	NEOABIETADIENE	0.40
53	SANDALACOPINADIEN-10-AL	0.33
54	PALLISTRINAL	0.36
55	LEVOPINADIENAL	1.27
56	ABIETA-8,11,13-TRIEN-10-AL	0.08
57	ABIETAL	4.62
58	ABIETA-7,13-DIEN-9-ONE	0.56
59	PALLISTRINOL	0.33
60	LEVOPININOL	0.32
61	4-EPI-DEHYDROABIETOL	0.16
62	NEOABIETINOL	2.75
63	ABIETOL	3.16
64	NEOABIETINOL	0.80