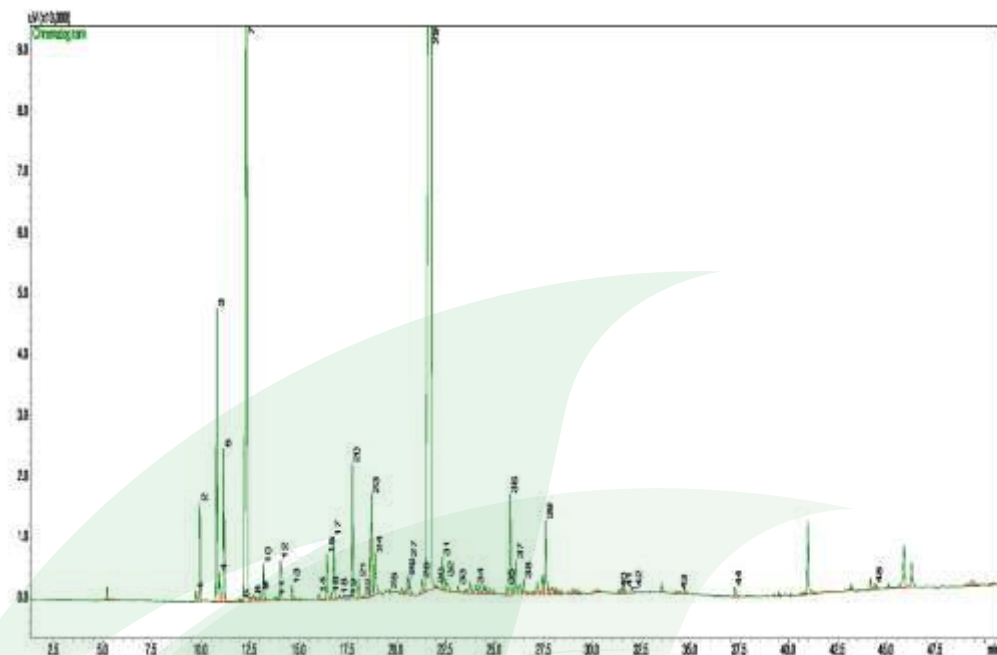


## Typical GC Profile



Peak#	Compound Name	Area%
1	ALPHA-THUJENE	0.11
2	ALPHA-PINENE	0.98
3	SABINENE	2.98
4	BETA-PINENE	0.40
5	BETA-MYRCENE	1.58
6	PARA-CYMENE	0.03
7	EUCALYPTOL	30.26
8	BETA-OCIMENE	0.11
9	GAMMA-TERPINENE	0.14
10	TRANS-SABINENE HYDRATE	0.43
11	ALPHA-TERPINOLENE	0.04
12	LINALDOL	0.46
13	NONA-1,3,7-TRIENE<4,8-DIMETHYL-(E)->	0.16
14	DELTA-TERPINEOL	0.11
15	TERPINENE-4-OL	0.55
16	4-DECENAL, (E)	0.06
17	ALPHA-TERPINEOL	0.80
18	DECENAL	0.02
19	ACETIC ACID, OCTYL ESTER	0.04
20	GAMMA-TERPINEOL	1.41
21	(Z)-NERAL	0.29
22	GERANIOL	0.03
23	LINALYL ACETATE	1.20
24	GERANIAL	0.60
25	BORNYL ACETATE	0.03
26	DELTA-TERPINYL ACETATE	0.23
27	TRANS-GERANIC ACID METHYL ESTER	0.16
28	ALPHA-TERPINYL ACETATE	0.25
29	ALPHA-TERPINYL ACETATE	45.89
30	2-DECENDIC ACID, METHYL ESTER	0.02
31	GERANYL ACETATE	0.33
32	CIS-DODEC-5-ENAL	0.25
33	BETA-ELEMENE	0.07
34	TERPINYL PROPIONATE	0.12
35	GERMACRENE D	0.11
36	BETA-SELINENE	1.08
37	ALPHA-SELINENE	0.42
38	GAMMA-CADINENE	0.19
39	NEROLIDOL <(E)->	0.80
40	FARNESAL <(2E,6Z)->	0.06
41	TRANS-FARNESOL	0.06
42	FARNESAL <(E,E)->	0.08
43	FARNESYL ACETATE	0.01
44	CORONARIN E	0.17
45	1-HEXACOSENE	0.07