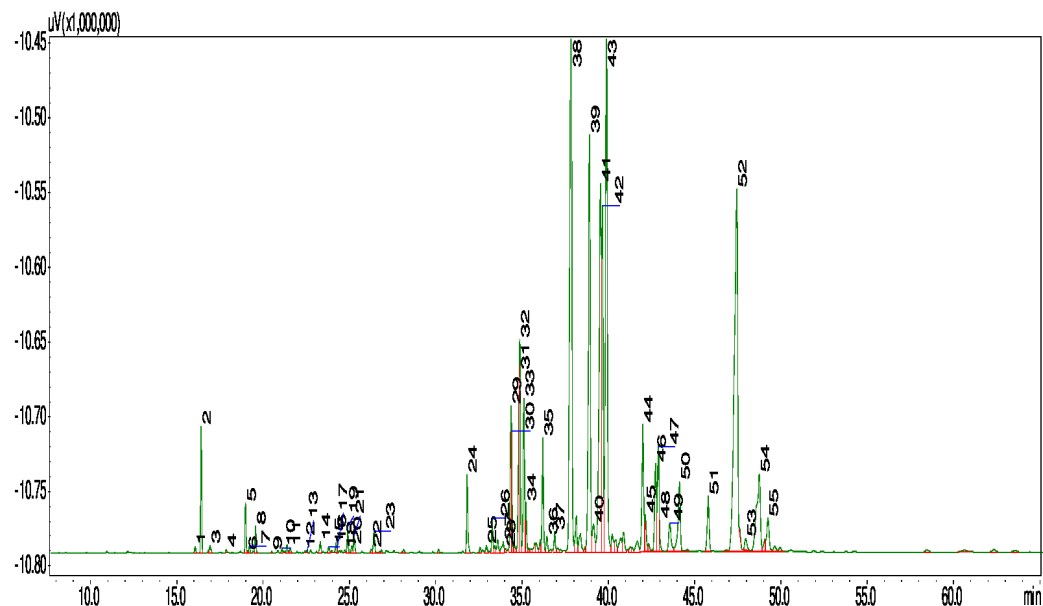


Typical GC Profile



Peak #	Compound Name	Area %	ACCEPTABLE RANGE
1	ALPHA-THUJENE	0.06	
2	ALPHA-PINENE	1.24	0.03 – 3.10%
3	CAMPHENE	0.10	
4	BETA-PINENE	0.03	
5	DELTA-3-CARENE	0.53	
6	ALPHA-TERPINENE	0.02	
7	PARA-CYMENE	0.07	
8	EUCALYPTOL	0.03	
9	GAMMA-TERPINENE	0.02	
10	ALPHA-PARA-DIMETHYL STYRENE	0.05	
11	ALPHA-TERPINOLENE	0.06	
12	FENCHYL ALCOHOL	0.02	
13	ALPHA-CAMPHOLENIC ALDEHYDE	0.02	
14	TRANS-PINOCARVEOL	0.14	
15	TRANS-PINOCAMPHONE	0.08	
16	BORNEOL	0.12	
17	ISOPINOCAMPHONE	0.02	
18	TRPINEN-4-OL	0.02	
19	ALPHA-TERPINEOL	0.32	
20	MYRTENAL	0.09	
21	VERBENONE	0.22	
22	TRANS-MYRTENOL	0.05	
23	2-CARENE-10-AL	0.31	
24	BETA-ELEMENE	1.01	1.00 – 1.60%
25	BETA-CARYOYLENE	0.13	
26	ALPHA-GUAIENE	0.46	
27	ALHA-HUMULENE	0.25	
28	ALPHA-GURJUNENE	0.05	
29	MYRTENIC ACID	1.88	0.70 – 2.50%
30	ISOLONGIFOLENE-9,10-DIHYDRO	1.41	1.40 – 1.80%
31	GAMMA-SELINENE	1.59	1.30 – 3.10%
32	BETA-SELINENE	2.59	2.50 – 6.00%
33	ALPHA-SELINENE	2.27	1.10 – 2.90%
34	DELTA-GUAIENE	2.25	1.70 – 4.00%
35	ALPHA-ELEMOL	1.72	1.20 – 2.50%
36	ALLOAROMADENDRENE	0.26	
37	GAMMA-GURJUNEN	0.32	
38	GUAIOL	14.64	12.50 – 18.70%
39	GAMMA-EUDESOL	8.40	5.90 – 8.70%
40	10-EPI-GAMMA-EUDESOL	0.71	
41	BETA-EUDESOL	6.31	5.00 – 7.20%
42	ALPHA-EUDESOL	5.37	3.90 – 6.70%
43	BULNESOL	10.58	7.10 – 11.80%
44	GAMMA-COSTOL	2.47	
45	CHAMAZULENE	0.62	0.20 – 0.70%
46	BETA-COSTOL	1.64	
47	ALPHA-COSTOL	1.75	
48	GUAIAZULENE	0.32	0.30 – 0.92%
49	CALLITRIN	0.74	
50	CALLITRIN ISOMER	1.74	
51	CALLITRISIN ISOMER	1.14	
52	DIHYDROCOLUMELLARIN	10.12	5.70 – 10.40%
53	CALLITRISIN	0.28	
54	COLUMELLARIN	1.23	0.70 – 1.40%
55	DIHYDROCALLITRISIN	0.89	0.50 – 1.00%

Notes