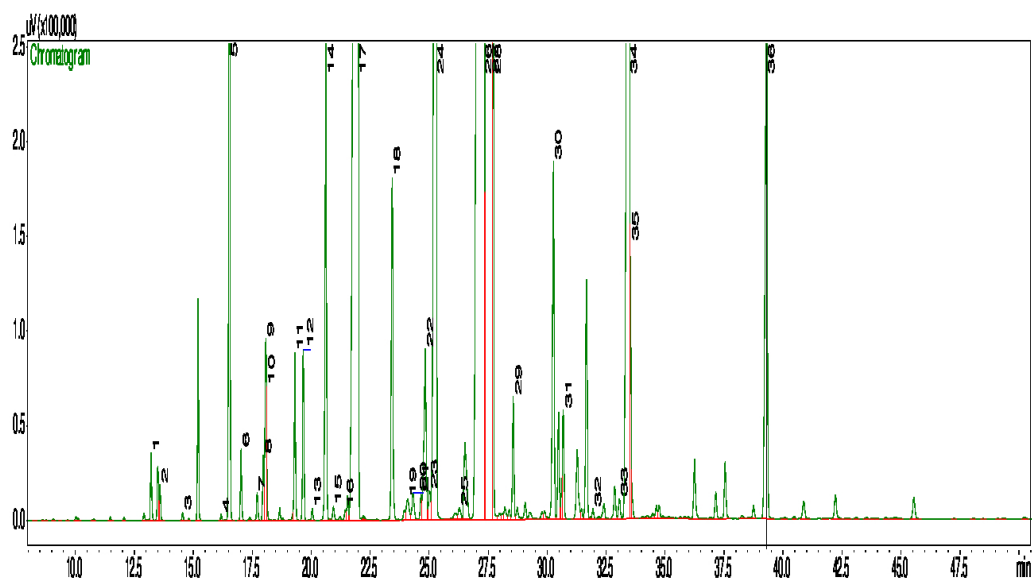


## Typical GC Profile



Peak#	Compound Name	Area%	ACCEPTABLE RANGE
1	CIS-3-HEXENOL	0.18	
2	HEXANOL	0.10	
3	HEPTANAL	0.02	
4	ALPHA-THUJENE	0.02	
5	ALPHA-PINENE	1.91	
6	CAMPHENE	0.19	
7	SABINENE	0.07	
8	BETA-PINENE	0.18	
9	OCTANAL	0.46	
10	MYRCENE	0.15	
11	PARA-CYMENE	0.46	
12	LIMONENE	0.47	
13	TRANS-BETA-OCIMENE	0.03	
14	GAMMA-TERPINENE	1.46	
15	CIS-LINALOOL OXIDE	0.05	
16	TRANS-LINAL OXIDE	0.03	
17	LINALOOL	18.72	8.0 – 25%
18	CAMPHOR	1.12	
19	2(E)-NONENAL	0.12	
20	BORNEOL	0.13	
21	TERPINEN-4-OL	0.08	
22	4(E)-DECENAL	0.78	
23	ALPHA-TERPINEOL	0.12	
24	DECANAL	6.92	
25	NERAL	0.06	
26	2(E)-DECENAL	27.78	20 – 35%
27	2-DODECEN-1-OL	18.53	10 – 25%
28	1-DECANOL	3.28	
29	UNDECANAL	0.37	
30	8-(Z)-UNDECENAL	1.26	
31	NERYL ACETATE	0.33	
32	BETA-ELEMENE	0.03	
33	BETA-CARYOPHYLLENE	0.07	
34	2(E)-DODECENAL	6.19	2.0 – 10%
35	2(E)-DODECE-1-OL	0.50	
36	2(E)-TRIDECENAL	2.63	

### Notes

.....

.....

.....