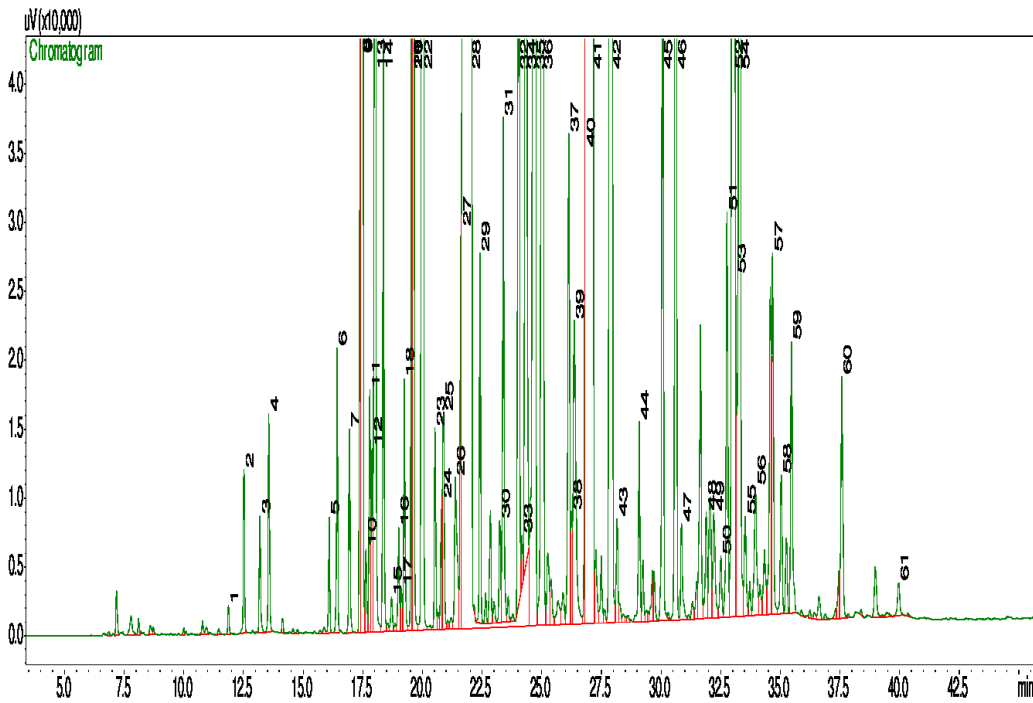


Typical GC Profile



Notes

Peak#	Compound Name	Area%	ACCEPTABLE RANGE
1	BUTYLACETATE	0.01	
2	METHYL HEXYL ETHER	0.06	
3	CIS-3-HXENOL	0.05	
4	HEXANOL	0.09	
5	ALPHA-TUJENE	0.05	
6	ALPHA-PINENE	0.12	
7	CAMPHENE	0.09	
8	1-OCTENE-3-OL	0.33	
9	ETHYL AMYL KETONE	1.49	
10	SABINENE	0.04	
11	BUTYL BUTYRATE	0.10	
12	BETA-PINENE	0.08	
13	MYRCENE	0.59	
14	HEXYL ACETATE	0.25	
15	ALPHA-PHELLANDRENE	0.02	
16	DELTA-3-CARENE	0.05	
17	ALPHA-TERPINENE	0.02	
18	PARA-CYMENTHENE	0.12	
19	LIMONENE	0.57	
20	1,8-CINEOL	1.06	MAX 2.5%
21	CIS-BETA-OCIMENE	2.34	
22	TRANS-BETA-OCIMENE	2.15	
23	GAMMA-TERPINENE	0.09	
24	TRANS-SABINENE HYDRATE	0.06	
25	CIS-LINALOOL OXIDE	0.12	
26	TRANS-LINALOOL OXIDE	0.13	
27	ALPHA-TERPINOLENE	0.14	
28	LINALOOL	35.73	25 – 40%
29	3-OCTYL CETATE	0.15	
30	HEXYLBUTYRATE	0.05	
31	CAMPHOR	0.26	MAX 1.2%
32	LAVANDULOL	0.66	
33	DELTA-TERPINEOL	0.02	
34	BORNEOL	0.78	
35	TERPINEN-4-OL	3.37	1 – 6%
36	ALPHA-TERPINEOL	1.10	
37	NEROL	0.29	
38	HEXYL-2-METHYL BUTYRATE	0.05	
39	HEXYL-3-METHYL BUTYRATE	0.26	
40	GERANIOL	0.06	
41	LINALYL ACETATE	34.08	25 – 46%
42	LAVANDULYL ACETATE	4.26	3 – 5%
43	BORNYL ACETATE	0.05	
44	HEXYL TIGLATE	0.10	
45	NERYL ACETATE	0.50	
46	GERANYL ACETATE	0.87	
47	HEXYL CAPROATE	0.06	
48	BETA-BOURBONENE	0.06	
49	COUMARIN	0.07	
50	CIS-ALPHA-BEGAMOTENE	0.04	
51	ALPHA-SANTALENE	0.22	
52	BETA-CARYOPHYLLENE	3.59	
53	TRANS-ALPHA-BERGAMOTENE	0.03	
54	TRANS-BETA-FARNESENE	1.16	
55	CIS-BETA-FARNESENE	0.06	
56	ALPHA-HUMULENE	0.10	
57	GERMACRENE D	0.20	
58	BETA-BISABOLENE	0.08	
59	GAMMA-CADINENE	0.16	