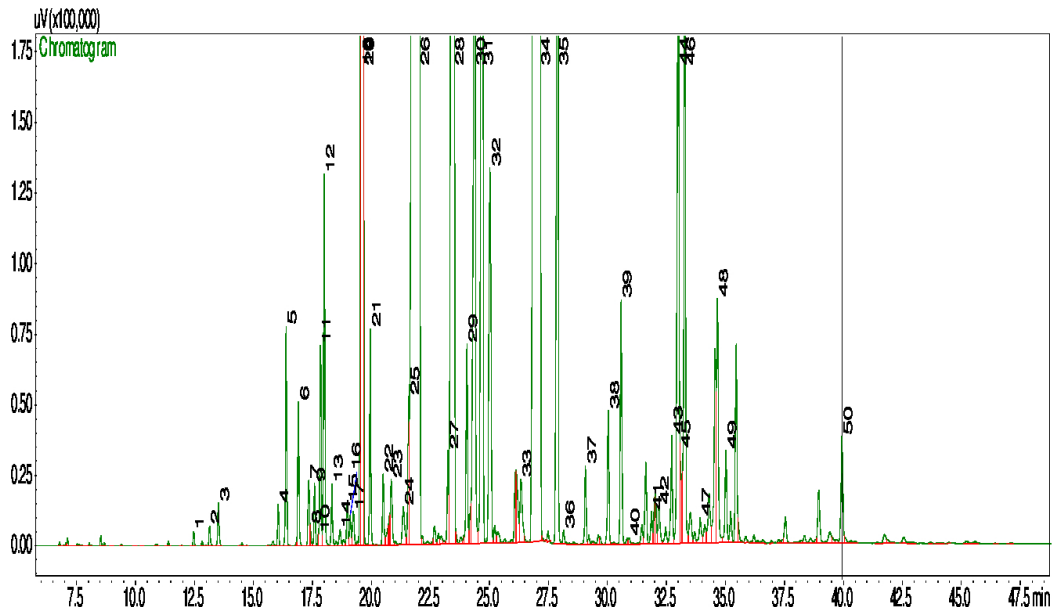


## Typical GC Profile



Peak#	Compound Name	Area%	ACCEPTABLE RANGE
1	HEXYL METHYL ETHER	0.02	
2	CIS-3-HEXENOL	0.04	
3	HEXANOL	0.08	
4	ALPHA-THUJENE	0.07	
5	ALPHA-PINENE	0.38	
6	CAMPHENE	0.27	
7	1-OCTENE-3-OL	0.14	
8	ETHYL AMYL KETONE	0.02	
9	SABINENE	0.11	
10	BUTYL BUTYRATE	0.01	
11	BETA-PINENE	0.37	
12	MYRCENE	0.67	0.3 – 1%
13	HEXYL ACETATE	0.12	
14	ALPHA-PHELLANDRENE	0.04	
15	DELTS-3-CARENE	0.08	
16	ALPHA-TERPINENE	0.06	
17	PARA-CYMENE	0.08	
18	LIMONENE	0.79	0.5 – 1.5%
19	EUCALYPTOL	5.77	4 – 8%
20	CIS-BETA-OCIMENE	0.61	0.5 – 1.5%
21	TRANS-BETA-OCIMENE	0.38	T – 1%
22	GAMMA-TERPINENE	0.14	
23	CIS-LINALOOL OXIDE	0.16	
24	TRANS-LINALOOL OXIDE	0.12	
25	ALPHA-TERPINOLENE	0.28	
26	LINALOOL	30.24	24 – 37%
27	HEXYL BUTYRATE	0.35	0.3 – 0.5%
28	CAMPHOR	7.37	6 – 8.5%
29	LAVANDULOL	0.41	0.2 – 1%
30	BORNEOL	2.21	1.5 – 3.5%
31	TERPINEN-4-OL	2.89	1.5 – 5%
32	ALPHA-TERPINEOL	1.06	0.3 – 1.3%
33	HEXYL-3-METHYL BUTYRATE	0.20	
34	LINALYL ACETATE	33.40	25 – 38%
35	LAVANDULYL ACETATE	2.29	
36	BORNYL ACETATE	0.03	
37	HEXYL TIGLATE	0.16	
38	NERYL ACETATE	0.28	
39	GERANYL ACETATE	0.51	
40	HEXYL CAPROATE	0.02	
41	BETA-BOURBONENE	0.07	
42	COUMARIN	0.02	
43	ALPHA-SANTALENE	0.25	
44	BETA-CARYOPHYLLENE	1.68	
45	TRANS-ALPHA-BERGAMOTENE	0.13	
46	CIS-BETA-FARNESENE	1.28	
47	ALPHA-HUMULENE	0.08	
48	GERMACRENE D	0.60	
49	BETA-BISABOLENE	0.23	
50	ALPHA-BISABOLOL	0.28	

## Notes

.....

.....

.....