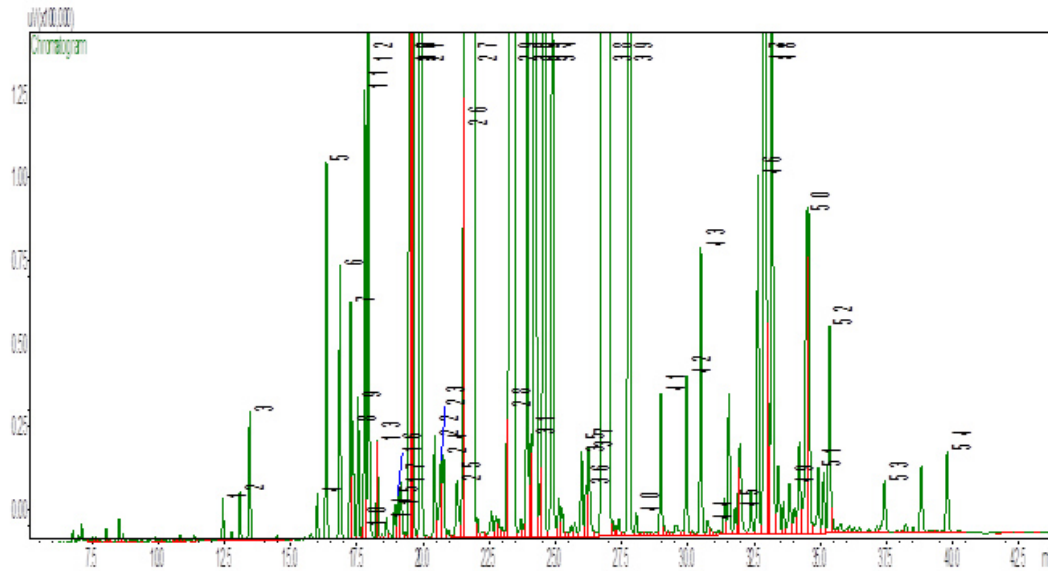


## Typical GC Profile



Peak#	Compound Name	Area%	ACCEPTABLE RANGE
1	METHYL HEXYL ETHER	0.04	
2	CIS-3-HEXENOL	0.05	
3	HEXANOL	0.14	
4	ALPHA-THUJENE	0.05	
5	ALPHA-PINENE	0.39	
6	CAMPHENE	0.30	
7	1-OCTENE-3-OL	0.27	
8	ETHYL AMYL KETONE	0.12	
9	SABINENE	0.16	
10	BUTYL BUTYRATE	0.01	
11	BETA-PINENE	0.49	
12	MYRCENE	0.59	
13	HEXYL ACETATE	0.06	
14	ALPHA-PHELLANDRENE	0.03	
15	DELTA-3-CARENE	0.04	
16	ALPHA-TERPINENE	0.06	
17	PARA-CYMENE	0.08	
18	LIMONENE	1.2	0.5 – 1.5%
19	EUCALYPTOL	7.70	6 – 11%
20	CIS-BETA-OCIMENE	2.23	1.5 – 3.0%
21	TRANS-BETA-OCIMENE	2.46	
22	GAMMA-TERPINENE	0.13	
23	TRANS-SABINENE HYDRATE	0.14	
24	CIS-LINALOOL OXIDE	0.11	
25	TRANS-LINALOOL OXIDE	0.11	
26	ALPHA-TERPINOLENE	0.31	
27	LINALOOL	30.77	26 – 38%
28	HEXYL BUTYRATE	0.12	
29	CAMPHOR	9.34	7 – 11%
30	LAVANDULOL	0.73	0.4 – 1.2%
31	ALPHA-TERPINEOL	0.14	
32	BORNEOL	2.34	1.5 – 3.5%
33	TERPINEN-4-OL	1.78	
34	ALPHA-TERPINEOL	1.03	
35	NEROL	0.13	
36	HEXYL-2-METHYL BUTYRATE	0.06	
37	HEXYL-3-METHYL BUTYRATE	0.17	
38	LINALYL ACETATE	26.84	20 – 29%
39	LAVANDULYL ACETATE	1.99	1 – 2%
40	BORNYL ACETATE	0.03	
41	HEXYL TIGLATE	0.17	
42	NERYL ACETATE	0.20	
43	GERANYL ACETATE	0.36	
44	HEXYL CAPROATE	0.02	
45	BETA-BOURBONENE	0.03	
46	ALPHA-SANTALENE	0.47	
47	BETA-CARYOPHYLLENE	2.07	
48	TRANS-BETA-FARNESENE	0.86	
49	ALPHA-HUMULENE	0.09	
50	GERMACRENE D	0.51	
51	BETA-BISABOLENE	0.12	
52	GAMMA-CADINENE	0.30	
53	CARYOPHYLENE OXIDE	0.09	
54	ALPHA-BISABOLOL	0.13	

## Notes