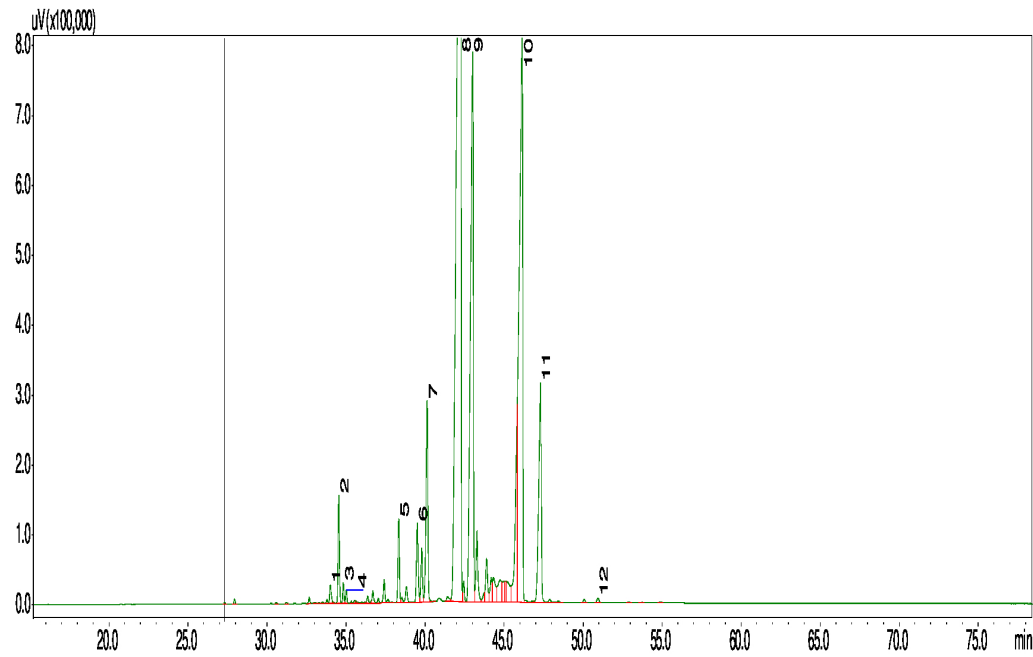


## Typical GC Profile



| Peak# | Compound Name                | Area% | ACCEPTABLE RANGE |
|-------|------------------------------|-------|------------------|
| 1     | GAMMA-SELINENE               | 0.28  | 0.10 – 0.40%     |
| 2     | BETA-SELINENE                | 1.39  | 0.90 – 2.30%     |
| 3     | ALPHA-SELINENE               | 0.24  | 0.20 – 1.00%     |
| 4     | EMOPHILA-1(10),8, TRIE       | 0.16  |                  |
| 5     | NEOINTERMDOL                 | 1.17  | 0.95 – 1.60%     |
| 6     | GLOBULOL                     | 1.32  |                  |
| 7     | EREMOPHILA-1,11-DIENE-9-ONE  | 3.59  |                  |
| 8     | EREMOPHILLONE                | 38.29 | 32.0 – 40.0%     |
| 9     | HYDROXY DIHYDROEREMOPHILONE  | 15.25 | 13.0 – 18.5%     |
| 10    | HYDROXYL EREMOPHILONE        | 19.81 | 19.0 – 26.5%     |
| 11    | ISOLANTOLACTONOID BUTENOLIDE | 5.49  |                  |
| 12    | TRANS-9-OXOEREMOPHILANE      | 0.10  |                  |

## Notes

.....

.....

.....